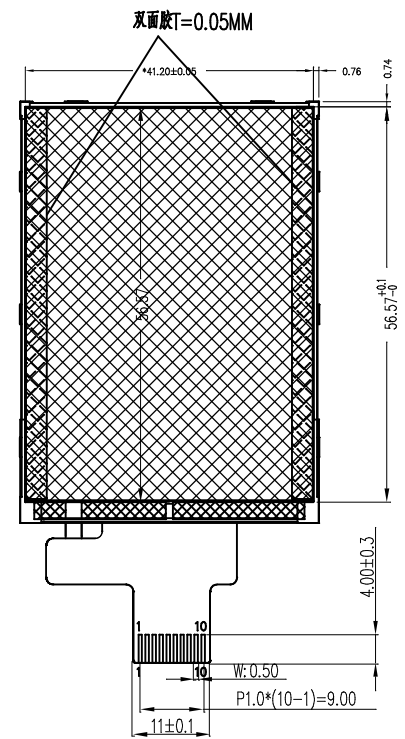
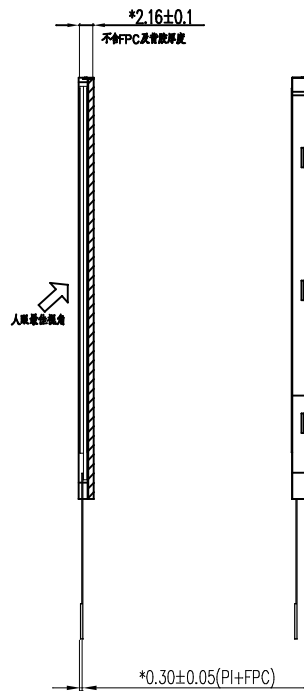
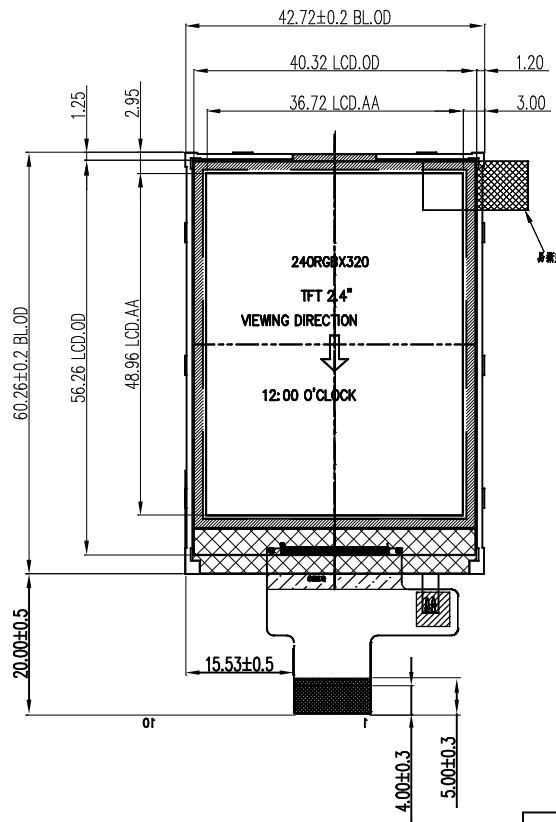


已确认此版本的所有图纸

客户 签名: _____ 日期: _____

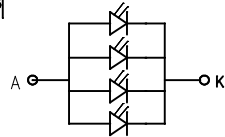
REV	DESCRIPTION	DATE
1.0	初次发行	2021-9-01

D
C
B
A



1	GN D
2	RS
3	CS
4	SCL
5	DATA
6	RESET
7	VDD
8	VSS
9	LEDA
10	LEDK

- NOTES:
- 1.DISPLAY TYPE: CTC 2.4 TN TFT
 - 2.DRIVER IC: ST7789V
 - 3.BACKLIGHT CIRCUIT:
LCM LUMINANCE: cd/m2 MIN ,280cd/m2 TYP
 - 4.WHITE X/Y: 采样值±0.03 , 鉴别值±0.03
 - 5.OPERATING TEMPERATURE: -20°C~70°C
 - 6.STORAGE TEMPERATURE: -30°C~80°C
 - 7.裁片: 上加0.15)下裁(0.13)
 8. "*"MEANS KEY DIMENSION
"()"MEANS REFERENCED DIMENSION
"Δ"MEANS REVISION RECORD
 9. ROHS REQUIREMENT
 10. 建议机壳开槽比LCDA.A单边大0.3-0.5mm; 泡棉开槽比LCD边宽(CF)单边至少小0.5mm.



电路图 V=3.2V,I=20*4=80MA

4SPI

Kingtech Group Co.,Ltd

TITLE:	ASSEMBLY	DO NOT SCALE THIS DRAWING, GENERAL TOLERANCE: ±0.2	
PART NO.:	PV02418H0110T		
DRAWN BY:	DATE:	PROJECTION:	
CHECKED BY:	DATE:	SCALE:N.T.S	UNIT: mm
APPROVED BY:	DATE:	SHEET: 1 OF 1	

5 4

3 2 1